

# Technical Data Sheet



## Mara<sup>®</sup> Jet DI-LSX

Mara<sup>®</sup> Jet DI-LSX was developed specifically for Roland printers that can be operated in the Eco Sol Max ink configuration.



### Key Features

- Chemically compatible and color-matched with Roland Eco Sol Max
- Solvent-based without harmful ingredients
- High-quality pigmentation
- Available in 440 ml cartridges and 1 l bottles
- Cartridges include Eco Sol Max chip
- Excellent machine compatibility and easy maintenance

### Applications

#### Printing Substrates

Mara<sup>®</sup> Jet DI-LSX is suitable for the following substrates:

- PVC self-adhesive films (monomer, polymer, and cast films)
- Banners and tarpaulin material
- Flexfoils for textile transfer
- Suitable papers
- Roll-up banners

Since substrates can vary in printability even within the same type, preliminary tests for the intended application are indispensable.

#### Compatible printers / printheads

Mara<sup>®</sup> Jet DI-LSX is suitable for the following printers operating with Eco Sol Max:

#### Roland

- SJ 540, 545, 645, 745, 1045
- XJ 540, 640, 740
- XC 540
- SP 300 (i), 540 (i)
- VP 300(i), 540 (i)
- RS 540, 640
- VS Series
- RE640
- SC545
- Roland Pro4 & Vsi Series
- XR, XF, RF, Vsi 640

#### Printheads:

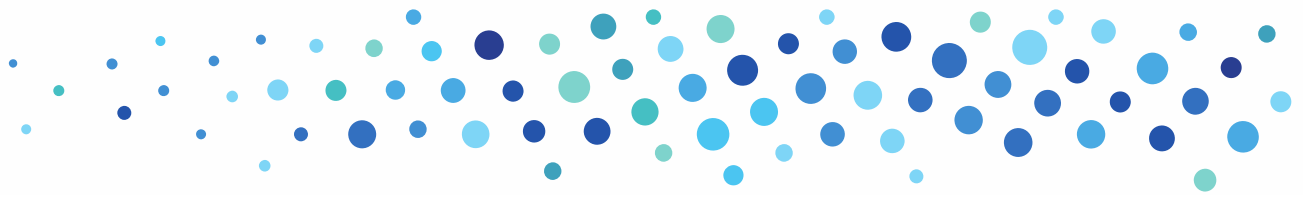
- Epson DX4, DX5, DX6, DX7

### Ink properties

Properties	DI-LSX
Plug & Print compatibility	+++
Resistance	++
Pigmentation	+++
Print stability	+++

### Curing

No changes to the drying parameters are required. However, adjustments may be necessary depending on substrate quality and ink deposit. For preheating,



print heating, and drying, we recommend a temperature range of 35-45 °C.

## Lightfastness

Pigments of high fade resistance are used which enable a 3-year vertical outdoor exposure, referred to the middle European climate and suitable substrates.

For fleet markings (e. g. vehicle advertising), an additional lamination or coating is required for mechanical protection.

## Range

### Basic Shades

- 428 Yellow
- 434 Light Magenta
- 438 Magenta
- 455 Light Cyan
- 459 Cyan
- 489 Black

### Further Products

- 170 White (DI-SX)

For applications requiring opaque white, the color shade **170** of the **Mara® Jet DI-SX** ink system can be combined with DI-LSX.

### Auxiliaries

- DI-UR 2 Cleaner

**DI-UR 2:** is used for rinsing/cleaning or short-term soaking of printheads and other ink-carrying components (e. g. after extended machine downtime) and is chemically adjusted to the ink formulation.

We recommend cleaning cycles at the start and end of production, as well as weekly cleaning of the nozzle plate.

## Shelf Life

The shelf life for an unopened ink container if stored in a dark room at a temperature of 15-25 °C is:

- 1 year for DI-SX 170
- 2 years for all DI-LSX inks

The ambient temperature may fall below this value only once for max. 2-3 days. Under different conditions, particularly other storage temperatures, the shelf life will be reduced. In such cases, the warranty given by Marabu expires.

## Change-over

**Switch & Print** / full compatibility in chemistry and color shade; no flushing required:

Switching from the OEM ink to Mara® Jet DI-LSX does not require any preliminary or additional machine cleaning. Ink cartridges can be replaced individually as needed or as a complete set.

**Switch & Swap** / flushing required:

Please note: When switching from a third-party supplier, a cleaning step should be carried out using the third-party supplier's cleaner, followed by cleaning with DI-UR 2. Replacing the filters (dampers) is generally recommended, as well as checking whether any further spare parts need to be replaced.

## Recommendation

For smooth production, always follow the guidelines provided by Marabu and the machine manufacturer. We recommend replacing ink filters annually and performing regular maintenance and service intervals.

## Labeling

For Mara® Jet DI-LSX and its auxiliaries, there are current Material Safety Data Sheets available according to EC regulation 1907/2006, informing in detail about all relevant safety data including labelling according to EC regulation 1272/2008 (CLP regulation). Such health and safety data may also be derived from the respective label.

## Safety Guidelines for Solvent-Based Printing Inks

Solvent-based inks contain substances that may irritate the skin. Therefore, take utmost care when working with solvent-based printing inks. Contaminated skin areas must be cleaned immediately with water and soap. Please follow the instructions on the labels and in the safety data sheets.





## Note

All statements made here refer exclusively to standard color shades. For custom inks, the described features may deviate. For comprehensive legal information regarding the use of our products, please refer to our General Terms and Conditions (GTC) at [www.marabu.com](http://www.marabu.com).

### **In the event of any queries, please contact:**

Technical Hotline

Phone: +49 7141 691140

[technical.hotline@marabu.com](mailto:technical.hotline@marabu.com)

Marabu GmbH & Co. KG | [www.marabu.com](http://www.marabu.com)

Version 08 - 04/2026

